

旭格ASE 60/80

铝合金推拉系统

Aluminium sliding system



旭格ASE 60/80推拉系统平台设定新标准

The Schüco ASE 60/80 sliding system range sets new standards



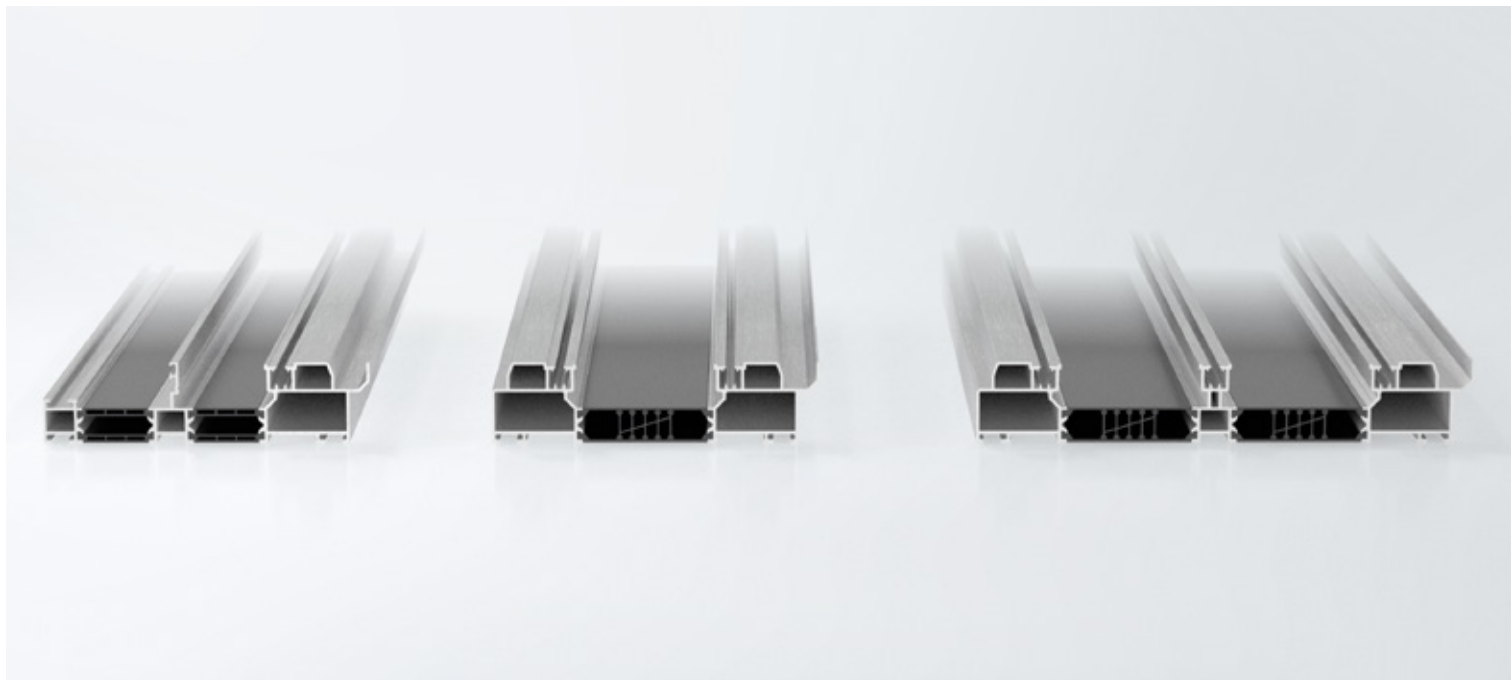
大规模推拉扇提供广阔的创意自由空间
Large vents provide plenty of creative freedom

旭格不断地对现有产品进行系统性优化。长期开发的硕果之一即全新的ASE 60/80铝合金推拉系统平台。在概念开发过程中，优先注重“平台”这一理念并突出对加工的细节优化。旭格借助这个全新产品平台在诸多方面开启新空间——通过优化的隔热区，各结构深度的型材系统均能发挥更为卓越的隔热性能，甚至能达到被动房水准（结构深度80）。此外，无论是单轨、双轨还是三轨的系统设计，所有结构都基于多功能型材，极大程度使用相同组件。五金系统也同样实现了模块化设计，可同时应用于推拉单元和提升推拉单元：除了极少的一些特例，所有组件都通用。扩展的尺寸规格、纤细的型材及针对双金属效应的解决方案使隔热性能超前的系统更为完善，从而满足众多建筑设计需求。

Schüco systematically and continuously optimises existing and established products. The result of this ongoing development is the new ASE 60/80 (Aluminium Sliding Element) sliding system range. The range concept was a top priority in its conception process, as was the detailed optimisation of the fabrication. Schüco is opening up many new dimensions with the new range – the profile system with its optimised insulation zones offers significantly improved thermal insulation properties in all basic depths, even up to passive house level (with a basic depth of 80 mm). Furthermore, all designs of the system – single, double and triple track – are based on multifunctional profiles, which allows optimal use of identical parts. The fittings system, which is also modular, can be used as both sliding and lift-and-slide fittings: apart from a few exceptions, all the components are identical. An expanded range of sizes, slimline profile constructions and solutions for the bimetallic effect complement the forward-looking thermal insulation, thereby fulfilling countless architectural design options.

可升级的模块化型材系统发挥卓越的隔热性能

Modular and scalable profile system with outstanding thermal insulation



所有开启类型基于分型材较少的型材模块
All opening types are based on profile modules with few half profiles

ASE 60/80推拉系统平台采用可升级的模块化型材系统，为多种隔热需求提供解决方案。ASE 60系统与过去的ASS 70.HI系统具有相同水准的隔热性能，且结构深度更小。对特殊隔热需求，包括被动房隔热水准，旭格提供80 mm结构深度的系统解决方案。整个系列的操作与加工都经过简化：任一结构深度的系统均可用较少的分型材实现不同的开启方式。凭借更多其他的功能整合，这个全新的推拉系统平台模块化程度极高。

The modular and scalable profile system of the ASE 60/80 sliding system range provides numerous options for the various thermal insulation requirements. The ASE 60 system therefore has the same level of insulation as ASS 70.HI, the previous version – with smaller basic depths. For special thermal insulation requirements up to passive house standard, a basic depth of 80 mm is available. Handling and fabrication have been simplified all round: different opening types can be implemented with few half profiles within each basic depth. Thanks to the possibility of integrating many more functions, the new sliding system range offers a high level of modularity.

高度兼容： 模块化五金系统

One size fits all:
the modular fittings system



五金选项：嵌入外框的平齐锁

Fittings option with flush-fitted locking
in the outer frame

旭格ASE 60/80推拉系统平台拥有目前市场上唯一能同时应用于推拉单元与推升推拉单元的五金系统，并且提供两种设计类型。

- 与之前的基础款系统相同，门锁稳固地嵌入外框中
- 高品质设计版（DesignLine），门锁嵌入扇内。外框轮廓流畅典雅——门扇关闭时也保持这样的设计

中间五金槽的重量平均分配到移动扇上，保障系统流畅的运行，实现轻松操作。该平台所有的推拉系统和提升推拉系统基于一个基础模块，为此也大大节省了各版本必要的定制组件。

The Schüco ASE 60/80 sliding system range is currently the first system on the market in which the fittings system can be used as both sliding and lift-and-slide fittings – and in two versions:

- As before, the basic version of the system reliably closes in the bolt pins installed in the outer frame
- In the higher-quality DesignLine version, the bolt pins are integrated in the vent. The outer frame therefore impresses with its clear, minimalist design – even when the vent is closed

The central fittings groove allows a balanced distribution of weight in the moving vent, ensuring optimum running characteristics and ease of operation. The fabrication and installation of all sliding and lift-and-slide versions is based on one basic module. Depending on the version, this removes the need to store a large number of different individual components.

SimplySmart设计、加工和安装

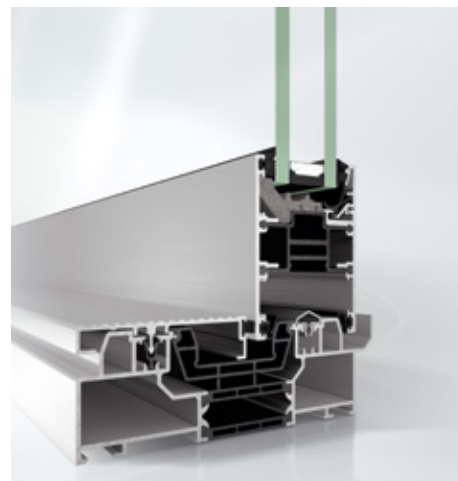
SimplySmart design, fabrication and installation



分开的隔热条减少双金属效应
Split insulating bar to reduce the bi-metallic effect



可选用螺丝加工角插件
Screw-type corner cleats are an option



外框使用共挤槽口型材减少加工步骤和组件
Outer frames with co-extruded gutter profiles reduce the number of fabrication steps and articles

旭格ASE 60/80推拉系统平台引入了一些全新的加工理念和细节。与以往的系统版本不同的是，该系统平台所有结构深度的产品都采用相同的加工过程。这样一来能更为灵活地根据项目选用合适的结构深度产品。可使用钉子或螺丝加工角插件。借助预加工组件，更轻松迅速地地完成加工。还可提供整合密封胶条的塑料型材。另一项组件优化是6 m的滑轨型材，帮助更轻松地安装推拉扇。

New principles and details have been introduced in the fabrication of the Schüco ASE 60/80 sliding system range. In contrast to previous versions, the whole fabrication process is now identical for both basic depths. This makes the project-specific selection of the right basic depth for fabrication more flexible. The corner cleats can be fabricated with either nails or screws. Using prepared components, fabrication is quicker and easier. Plastic profiles with integrated gaskets, for example, are therefore available. In another simplification, the slider profile is now available as a 6 m profile, which helps make vent installation easier.

高品质设计与 最便捷的操作

High-quality design and maximum operating comfort

纤细的可视面宽度、可选用的平齐门槛使全新旭格推拉系统在外观、设计与使用便捷度方面独树一帜。此外，隐藏式五金槽使技术组件，如五金或隔热泡沫不再外露。系统整体流畅美观，呈现高品质设计。

内嵌的SmartStop与SmartClose模块不仅保障系统安全运行，也提升用户操作便捷度。提升推拉系统也新增两个辅助模块协助用户提升和放下推拉扇。在提升过程中，用户借助内嵌的弹力辅助件更轻松地开展推拉扇。在关闭和下降过程中，借助执手减震模块对扇和执手的运行进行缓冲。这两个辅助模块为大规格的推拉扇实现轻松操作。

Narrow face widths and the option of level thresholds make the new Schüco sliding system unique in terms of form, design and user comfort.

Moreover, the concealed fittings groove means that technical components, such as fittings or insulating foams, are no longer visible. The overall view of the system therefore has a clean form and high-quality design.

Integrated SmartStop and SmartClose modules ensure more than just security during operation and increased user comfort. In the lift-and-slide versions, two further modules assist the user in lifting and lowering the moving vent. During lifting, an integrated operating aid helps the user by means of spring tension, making the vent even easier to open. During closing and lowering, another module, a handle damper, cushions the vents and operating handle. These two modules make even large-scale formats easy to operate.



隔热可达被动房水准
Thermal insulation to
passive house standard

加工优势与 技术信息

Fabrication benefits and technical information

投资可靠性	Investment security
<ul style="list-style-type: none"> ■ 可升级的模块化型材系统：隔热方面具有极高的灵活性 ■ 13种不同的开启方式：提供近乎无限的设计自由 ■ 使用高品质组件，实现可靠和持久的系统解决方案 	<ul style="list-style-type: none"> ■ Modular and scalable profile system: Highly flexible in terms of thermal insulation ■ 13 different opening opening types: Almost unlimited design freedom ■ The high-quality components used guarantee reliable and long-lasting system solutions
设计优势	Planning benefits
<ul style="list-style-type: none"> ■ 模块化的可升级型材系统，在隔热方面保障极高的灵活性 ■ 平齐的门槛和纤细的耦合型材：突出舒适和设计 ■ 隐藏式五金槽，技术组件不外露：干净雅致的外观 	<ul style="list-style-type: none"> ■ Modularity of the scalable profile system ensures a high level of flexibility when it comes to thermal insulation ■ Ground-level threshold and narrow coupling profiles: Highlights in terms of comfort and design ■ Concealed fittings groove without visible technical components: Clear and elegant look
加工优势	Fabrication benefits
<ul style="list-style-type: none"> ■ 推拉扇加工无复合处理，减少双金属效应，也适用于防盗解决方案 ■ 新特征：一个五金件系统同时适用于推拉和提升推拉系统，降低复杂度，减轻仓储压力 ■ 多功能组件：节省加工时间，提升加工进程的可靠度 	<ul style="list-style-type: none"> ■ Vent fabrication without rolling to reduce the bimetallic effect, even for RC solutions ■ New: The use of a fittings system both for sliding and lift-and-slide applications reduces complexity and storage ■ Multifunctional components: Short fabrication time and increased process reliability



全新旭格ASE 60/80推拉系统平台为隔热、设计与舒适设定新标准。使用多种多功能组件确保节省加工和安装时间。该平台拥有目前市场上唯一能同时应用于推拉单元与提升推拉单元的五金系统。

The new ASE 60/80 sliding system range sets new standards in terms of thermal insulation, design and comfort. Numerous multifunctional components ensure shortened fabrication and installation times. It is currently the first system on the market in which the fittings system can be used as both sliding and lift-and-slide fittings.

德国旭格集团
www.schueco.com.cn

旭格 – 门、窗和幕墙系统解决方案供应商
位于比勒菲尔特的德国旭格集团开发并销售门、窗、幕墙系统解决方案。旭格在全球拥有超过4900名员工，致力于在当代和未来成为技术与服务出众的行业先驱。除了提供创新的住宅类与商业类产品，作为建筑外立面专家的旭格在项目全程给予咨询和数字化解决方案——从最初的概念到设计、加工和安装。全球12,000名加工商、开发商、建筑师和投资商与旭格建立合作。集团业务遍及全球80多个国家。2017年，集团的年销售额达到15.75亿欧元。更多信息请访问www.schueco.com.cn

Schüco – System solutions for windows, doors and façades

Based in Bielefeld, the Schüco Group develops and sells system solutions for windows, doors and façades. With more than 4900 employees worldwide, the company strives to be the industry leader in terms of technology and service today and in the future. In addition to innovative products for residential and commercial buildings, the building envelope specialist offers consultation and digital solutions for all phases of a building project – from the initial idea through to design, fabrication and installation. 12,000 fabricators, developers, architects and investors around the world work together with Schüco. The company is active in more than 80 countries and achieved a turnover of 1.575 billion euros in 2017. For more information, visit www.schueco.com

SCHÜCO

香港辦公室
九龍土瓜灣美光街38號安昌大廈地下
G/F, On Cheong Building No.38, Mei Kwong
Street To Kwa Wan Kowloon, Hong Kong
Tel: (852) 2362 7183
Fax: (852) 2334 3525

香港門市
香港灣仔駱克道356號鴻福大廈地下D舖
Flat D, G/F, Hung Fook Mansion,
356 Lockhart Road, Wan Chai HK
Tel: (852) 2802 6678
Fax: (852) 2802 6672